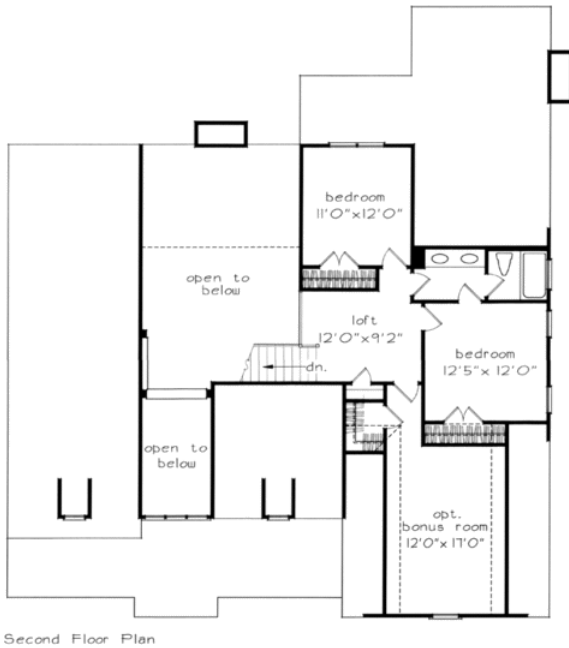
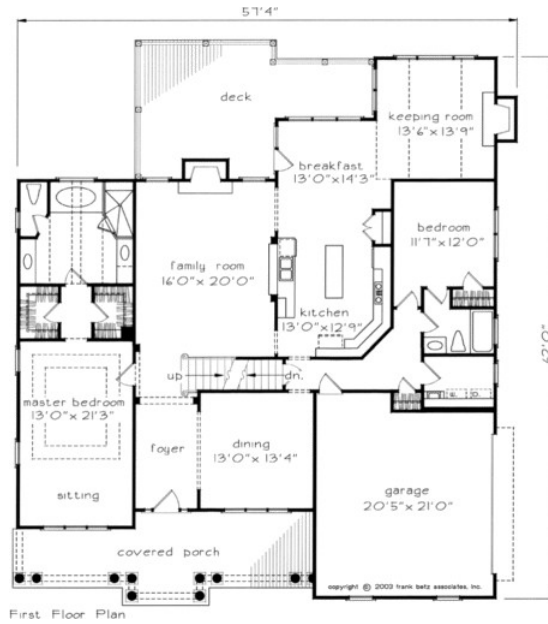


888.717.3003



STEWARTS LANDING



Square Footage

Total	2691
First Floor	2140
Second Floor	551
Opt. Bonus	265

Dimensions

Width	57' - 4"
Depth	62' - 0"
Height	27' - 6"

Floorplans and Elevations are subject to change. Floorplan dimensions are approximate. Consult working drawings for actual dimensions and information. Elevations are artists' conceptions. Photographs may have been modified from the original construction documents.

**2956 heated sqft. Build cost starting at approx. \$580,632.00 (slab foundation)  
Add approximately \$65,000.00 for full unfinished basement**