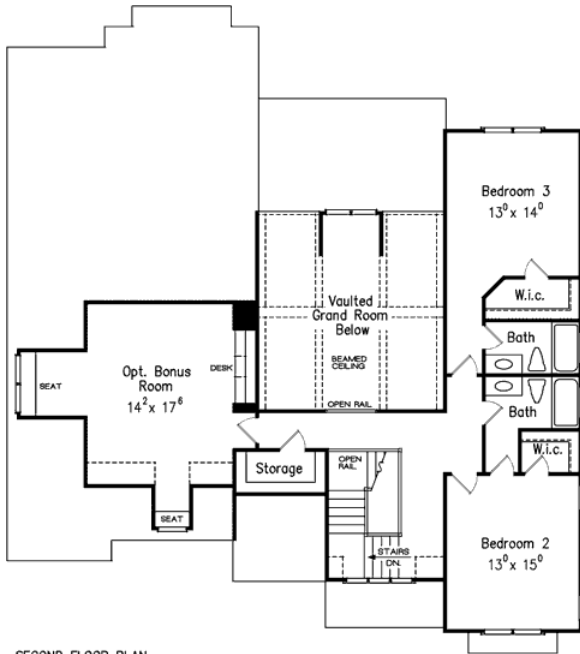
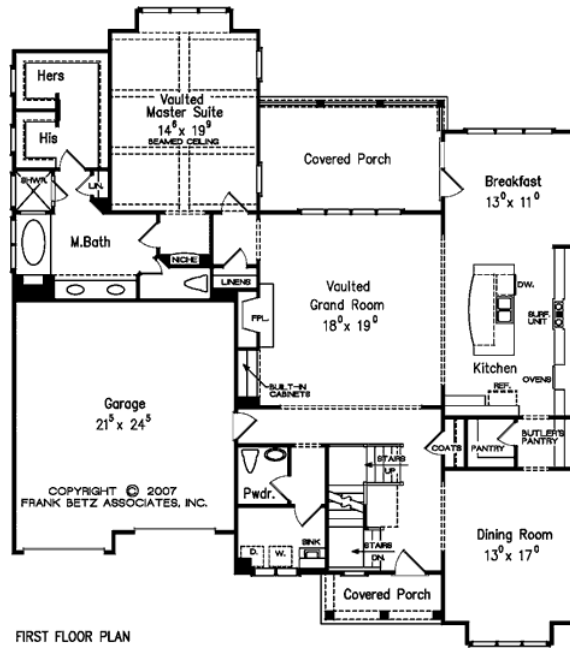


888.717.3003



SPENCERS MILL



Square Footage

Total	2884
First Floor	2056
Second Floor	828
Opt. Bonus	353

Dimensions

Width	56' - 0"
Depth	63' - 0"
Height	32' - 6"

Floorplans and Elevations are subject to change. Floorplan dimensions are approximate. Consult working drawings for actual dimensions and information. Elevations are artists' conceptions. Photographs may have been modified from the original construction documents.

**3237 heated sqft. Build cost starting at approx. \$618,023.00 (slab foundation).
Add approximately \$84,000.00 for optional full unfinished basement**