

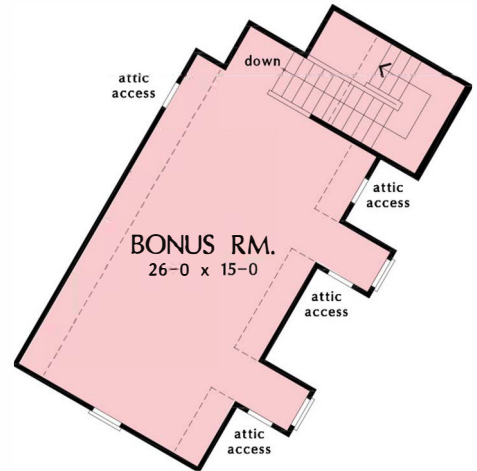
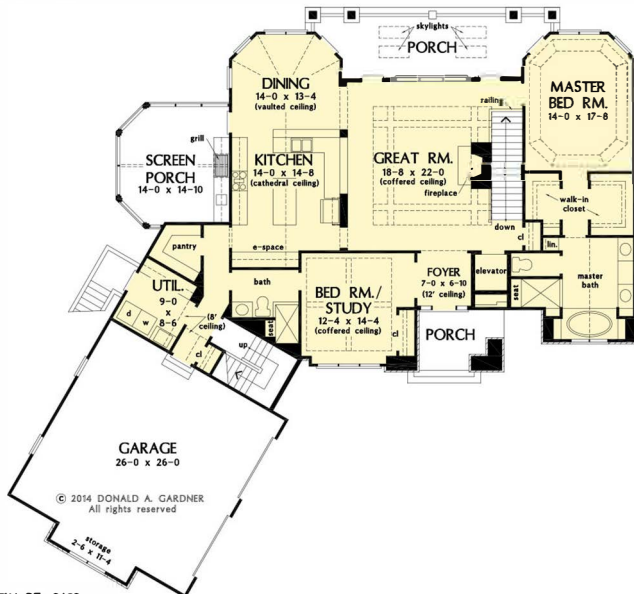


The Sandy Creek Home Plan # W-1329-D



FLOOR PLAN
PLAN NO. 1329 D

FLOOR PLAN
PLAN NO. 1329 D



TOTAL SF - 3123
81'5" W X 76'6" D
MAIN LEVEL SF - 2052

BONUS ROOM
OPTIONAL BONUS ROOM SF - 556

3123 heated sqft.
Build cost starting at approx. \$730,938.00.
Add approx. \$49,000.00 for optional bonus room.
Pricing does not include elevator and outdoor kitchen.

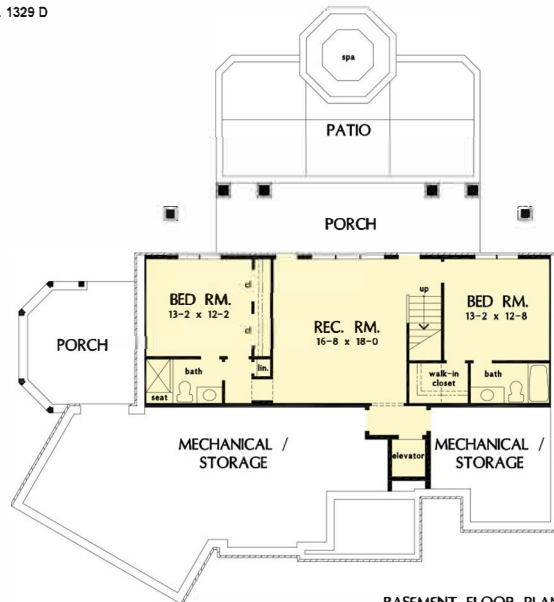
Floorplans and elevations are subject to change.
Floorplan dimensions and square footage is approximate.
Elevations are artists' conceptions.



The Sandy Creek Home Plan # W-1329-D



FLOOR PLAN
PLAN NO. 1329 D



BASEMENT FLOOR PLAN
PLAN NO. 1329-D

BASEMENT SF - 1071

3123 heated sqft.
Build cost starting at approx. \$730,938.00.
Add approx. \$49,000.00 for optional bonus room.
Pricing does not include elevator and outdoor kitchen.

Floorplans and elevations are subject to change.
Floorplan dimensions and square footage is approximate.
Elevations are artists' conceptions.