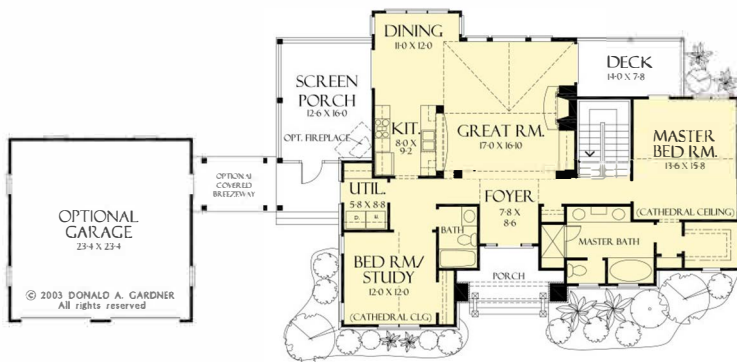




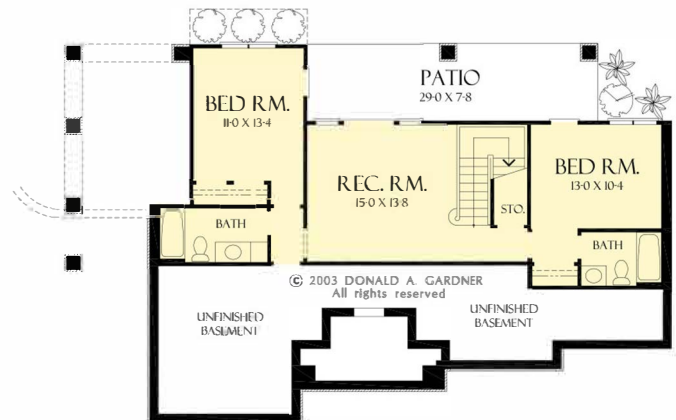
# The Riva Ridge Home Plan # W-5013



FLOOR PLAN  
PLAN NO. 5013



FLOOR PLAN  
PLAN NO. 5013



TOTAL SF - 2263  
60'6" W X 41'2" D  
MAIN LEVEL SF - 1428

BASEMENT SF - 835

2263 heated sqft.  
Build cost starting at approx. \$558,529.00.  
Pricing does include optional garage, breezeway, and side porch.  
Pricing does not include outdoor fireplace.

Floorplans and elevations are subject to change.  
Floorplan dimensions and square footage is approximate.  
Elevations are artists' conceptions.