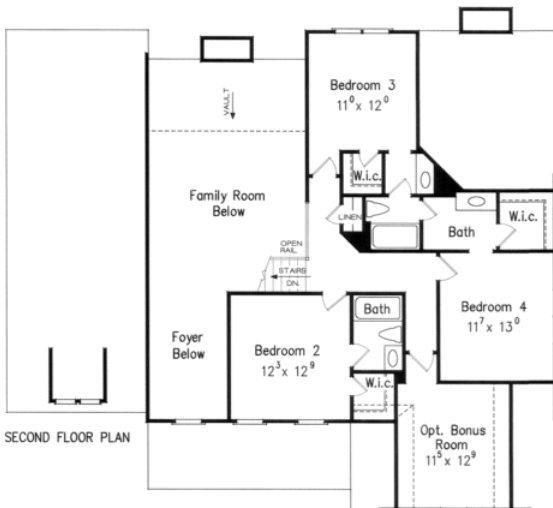
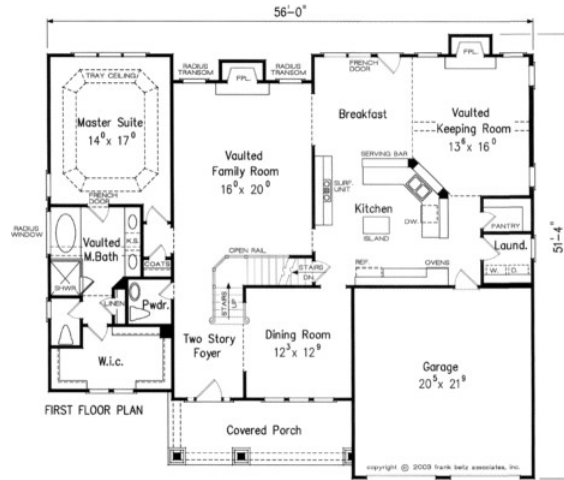


888.717.3003



PALO ALTO



### Square Footage

Total	2744
First Floor	1909
Second Floor	835
Opt. Bonus	165

### Dimensions

Width	56' - 0"
Depth	51' - 4"
Height	31' - 0"

Floorplans and Elevations are subject to change. Floorplan dimensions are approximate. Consult working drawings for actual dimensions and information. Elevations are artists' conceptions. Photographs may have been modified from the original construction documents.

**2909 heated sqft. Build cost starting at approx. \$567,269.00 (slab foundation)  
Add approximately \$58,000.00 for full unfinished basement**