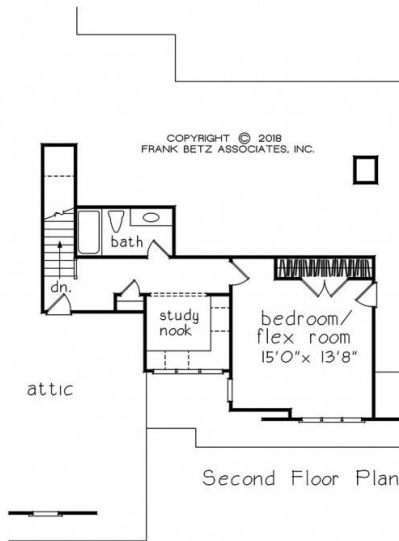
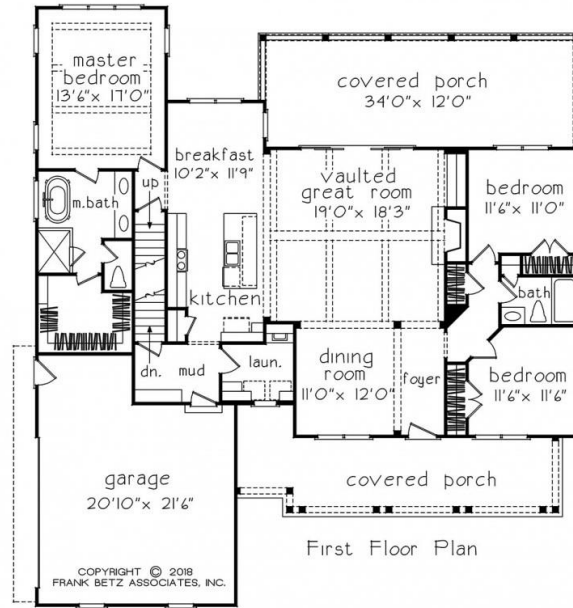


888.717.3003

NESBIT FERRY



Square Footage

Total	2409
First Floor	1912
Second Floor	497

Dimensions

Width	58' - 0"
Depth	64' - 0"
Height	25' - 0"

Floorplans and Elevations are subject to change. Floorplan dimensions are approximate. Consult working drawings for actual dimensions and information. Elevations are artists' conceptions. Photographs may have been modified from the original construction documents.

**2409 heated sqft. Build cost starting at approx. \$556,263.00 (slab foundation)
Add approximately \$55,000.00 for full unfinished basement**