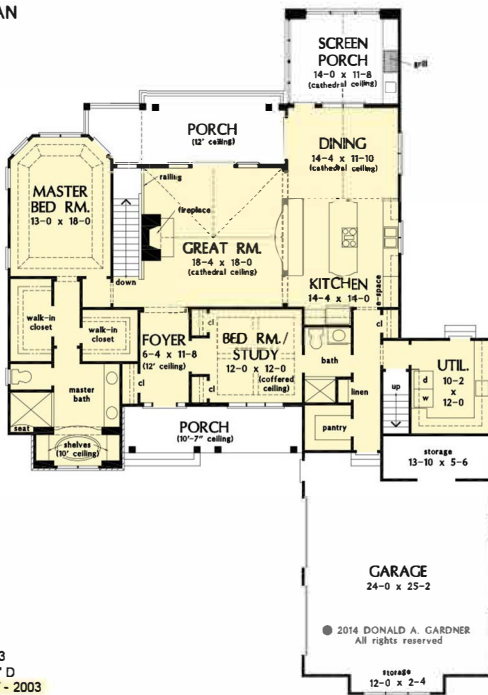




# The Mosscliff House Plan # W-1338-D

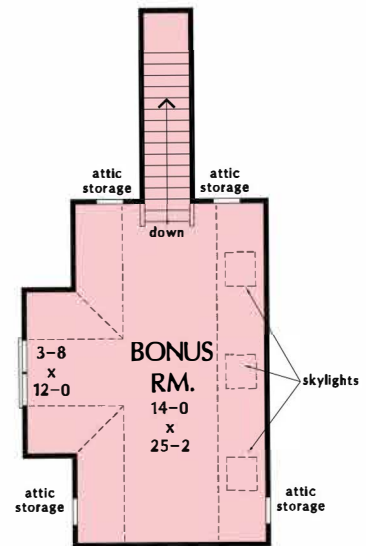


FLOOR PLAN  
PLAN NO. 1338



TOTAL SF - 2993  
62'10" W X 89'0" D  
MAIN LEVEL SF - 2003

FLOOR PLAN  
PLAN NO. 1338



BONUS ROOM  
OPTIONAL BONUS ROOM SF - 474

2993 heated sqft.  
Build cost starting at approx. \$722,470.00.  
Add approximately \$42,000.00 for optional bonus room. Pricing does not include outdoor kitchen.

Floorplans and elevations are subject to change.  
Floorplan dimensions and square footage is approximate.  
Elevations are artists' conceptions.



# The Mosscliff House Plan # W-1338-D



FLOOR PLAN  
PLAN NO. 1338 D



BASEMENT SF - 990

2993 heated sqft.  
Build cost starting at approx. \$722,470.00.  
Add approximately \$42,000.00 for optional bonus room.  
Pricing does not include outdoor kitchen.

Floorplans and elevations are subject to change.  
Floorplan dimensions and square footage is approximate.  
Elevations are artists' conceptions.