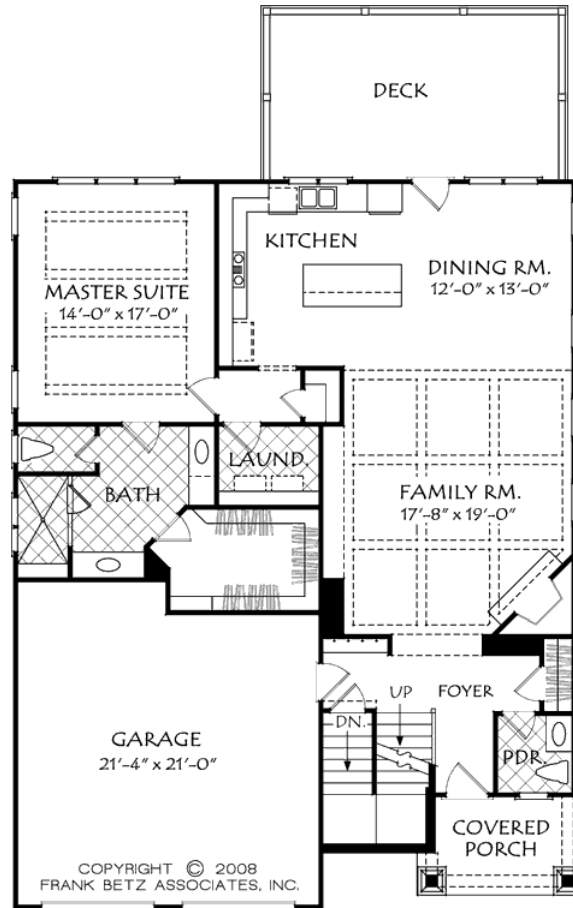


888.717.3003



MORNINGSIDE MANOR



FIRST FLOOR PLAN

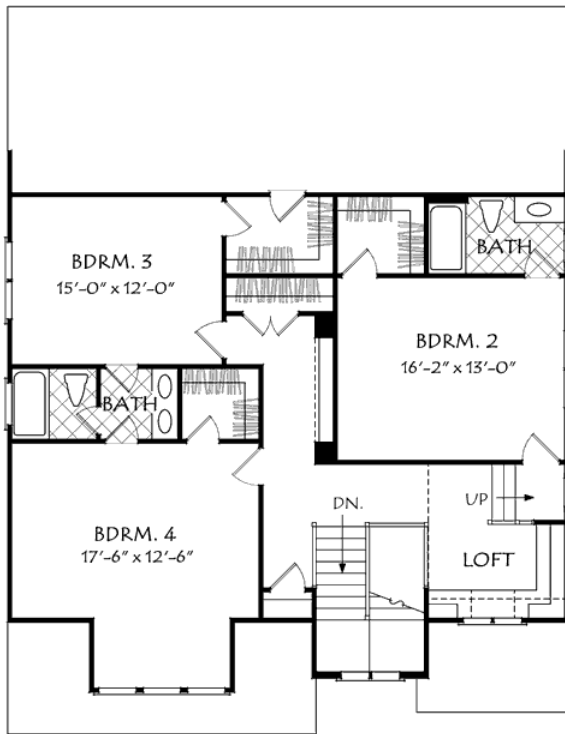
***2709 heated sqft. Build cost starting at approx. \$537,374.00 (slab foundation).  
Add approximately \$67,000.00 for optional full unfinished basement***

## Square Footage

Total	2709
First Floor	1482
Second Floor	1227

## Dimensions

Width	40' - 0"
Depth	52' - 0"
Height	35' - 6"



SECOND FLOOR PLAN

*Floorplans and Elevations are subject to change. Floorplan dimensions are approximate. Consult working drawings for actual dimensions and information. Elevations are artists' conceptions. Photographs may have been modified from the original construction documents.*

**2709 heated sqft. Build cost starting at approx. \$537,374.00 (slab foundation).  
Add approximately \$67,000.00 for optional full unfinished basement**