



The Laurelwood House Plan # W-5024



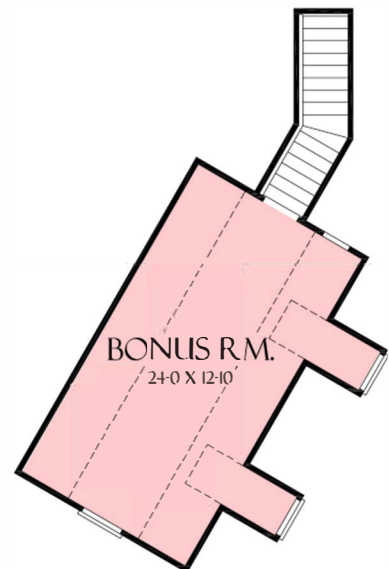
FLOOR PLAN
PLAN NO. 5024



TOTAL SF - 3014
77'4\"/>

3014 heated sqft.
Build cost starting at approx. \$699,617.00.
Add approx. \$32,000.00 for optional bonus room.

FLOOR PLAN
PLAN NO. 5024



BONUS ROOM
OPTIONAL BONUS ROOM SF - 364

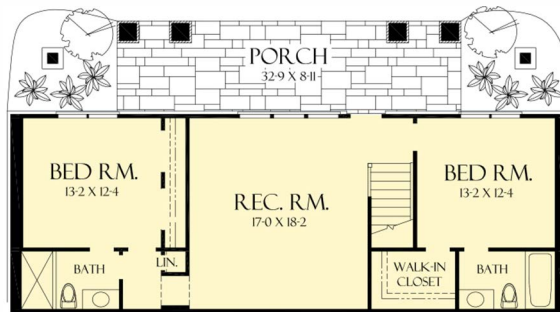
Floorplans and elevations are subject to change.
Floorplan dimensions and square footage is approximate.
Elevations are artists' conceptions.



The Laurelwood House Plan # W-5024



FLOOR PLAN
PLAN NO. 5024



© 2005 DONALD A. GARDNER
All rights reserved

BASEMENT SF - 998

3014 heated sqft.
Build cost starting at approx. \$699,617.00.
Add approx. \$32,000.00 for optional bonus room.

Floorplans and elevations are subject to change.
Floorplan dimensions and square footage is approximate.
Elevations are artists' conceptions.