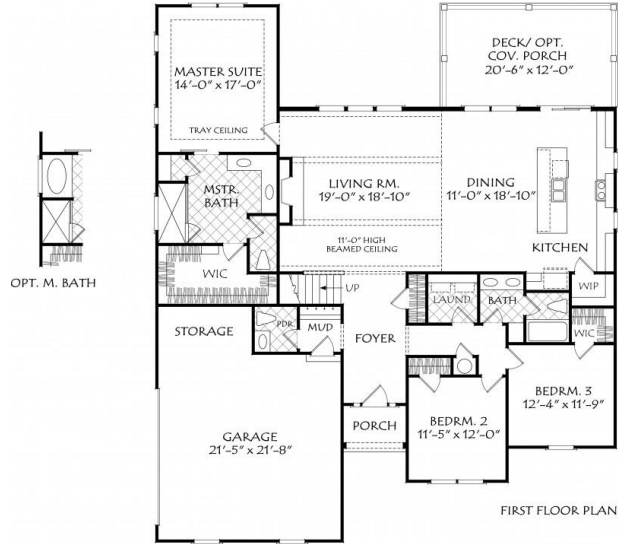


888.717.3003



LANIER LANDING



OPT. SECOND FLOOR PLAN

Square Footage

Total	2042
First Floor	2042

Dimensions

Width	54' - 0"
Depth	63' - 0"
Height	27' - 6"

Floorplans and Elevations are subject to change. Floorplan dimensions are approximate. Consult working drawings for actual dimensions and information.

**2042 heated sqft. Build cost starting at approx. \$490,738.00 (slab foundation)**

**2520 heated sqft with optional second floor. Build cost starting at approx. \$541,949.00 (slab foundation).**

**Pricing doesn't include covered rear porch.**

**Add approximately \$60,000.00 for full unfinished basement**