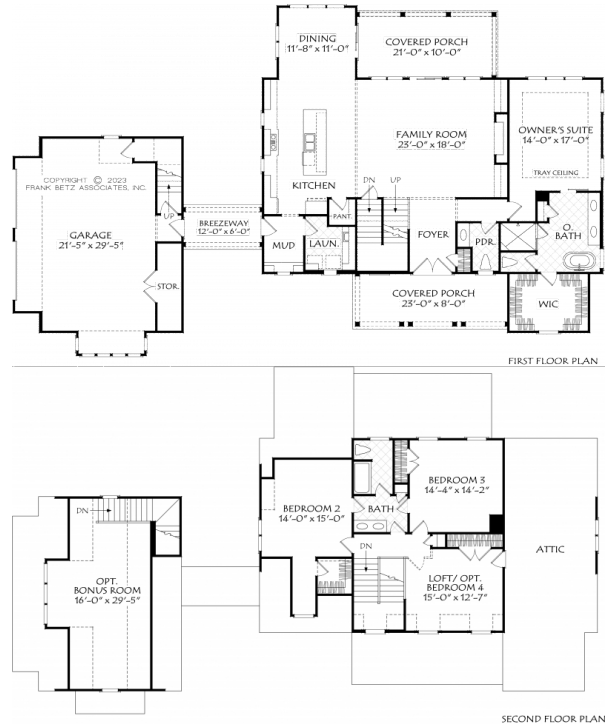


888.717.3003



KELSEYS FARM



Square Footage

Total	2706
First Floor	1808
Second Floor	898
Opt. Bonus	396

Dimensions

Width	90' - 0"
Depth	53' - 6"
Height	28' - 0"

Floorplans and Elevations are subject to change. Floorplan dimensions are approximate. Consult working drawings for actual dimensions and information. Elevations are artists' conceptions. Photographs may have been modified from the original construction documents.

**3102 heated sqft. Build cost starting at approx. \$650,326.00 (slab foundation)
Add approximately \$53,000.00 for full unfinished basement**