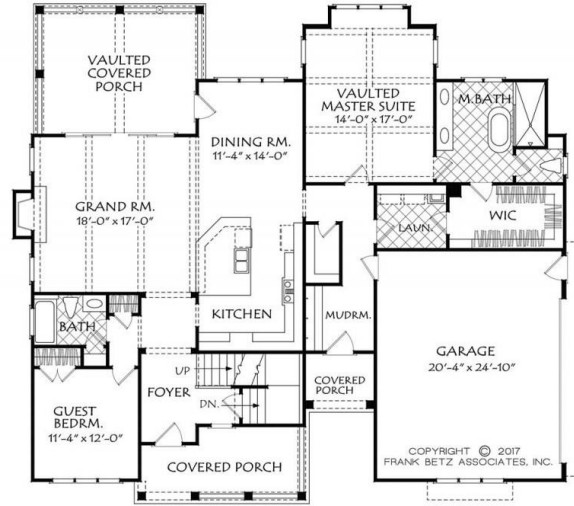


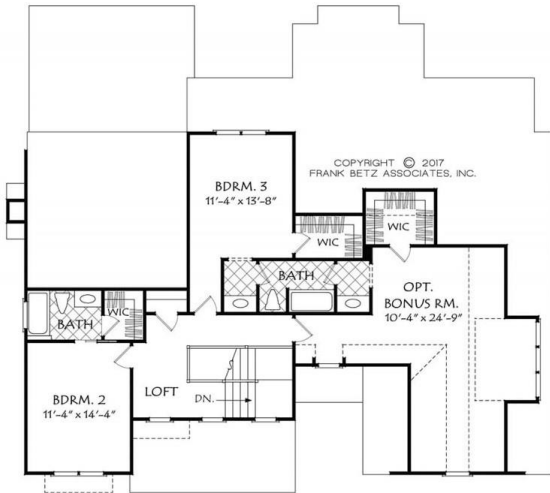
888.717.3003



HOLSTON RIDGE



FIRST FLOOR PLAN



SECOND FLOOR PLAN

Square Footage

Total	2545
First Floor	1833
Second Floor	712

Dimensions

Width	58' - 6"
Depth	52' - 0"
Height	32' - 0"

Floorplans and Elevations are subject to change. Floorplan dimensions are approximate. Consult working drawings for actual dimensions and information. Elevations are artists' conceptions. Photographs may have been modified from the original construction documents.

**3038 heated sqft. Build cost starting at approx. \$600,105.00 (slab foundation).
Add approximately \$52,000.00 for full unfinished basement**