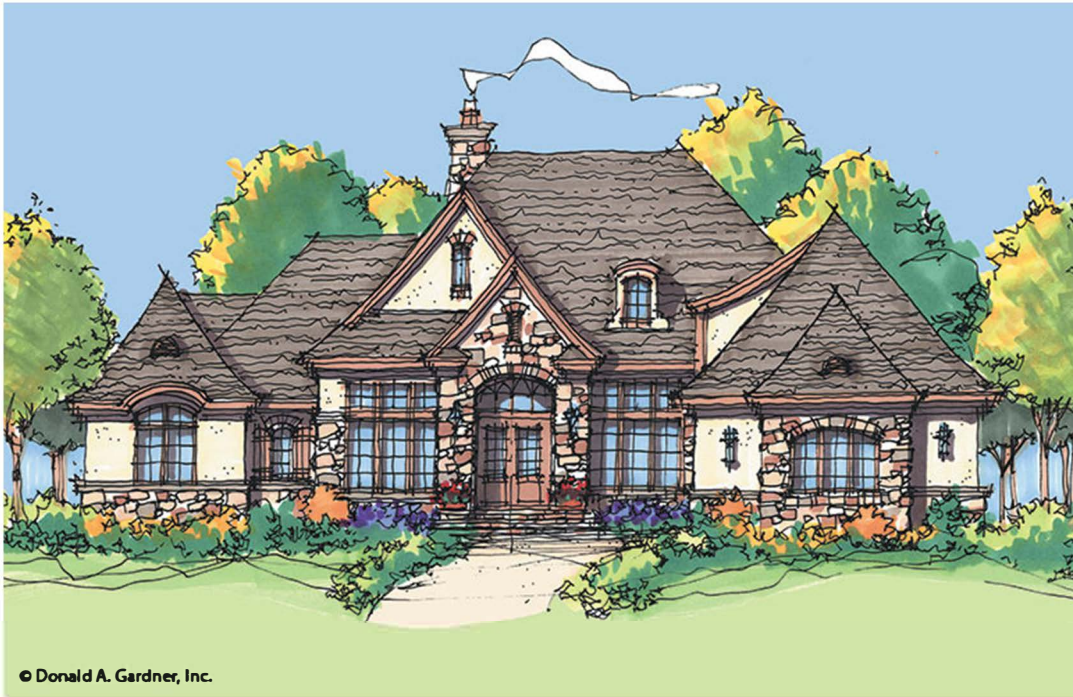
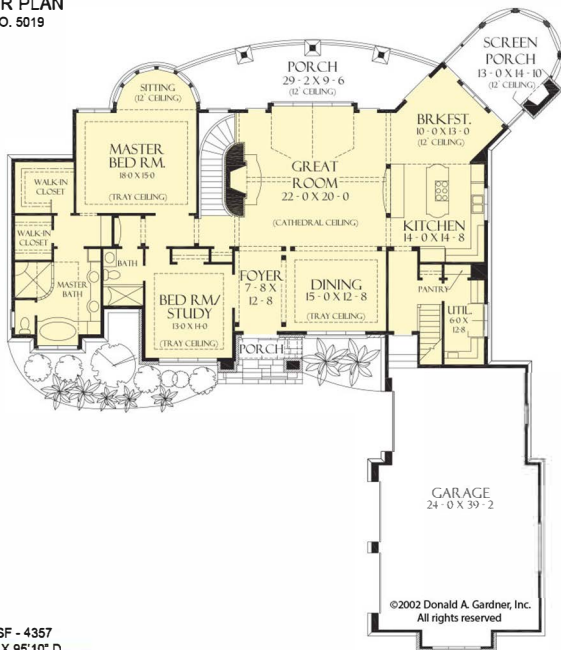




The Hollowcrest Home Plan # W-5019

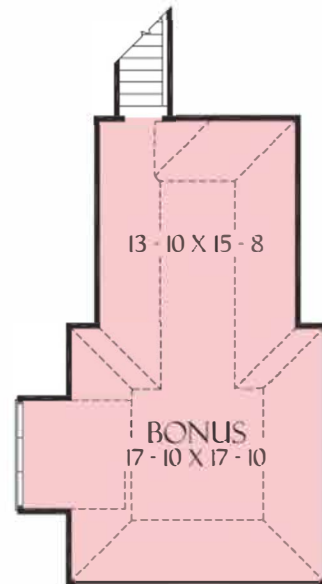


FLOOR PLAN
PLAN NO. 5019



TOTAL SF - 4357
82'4" W X 95'10" D
MAIN LEVEL SF - 2537

FLOOR PLAN
PLAN NO. 5019



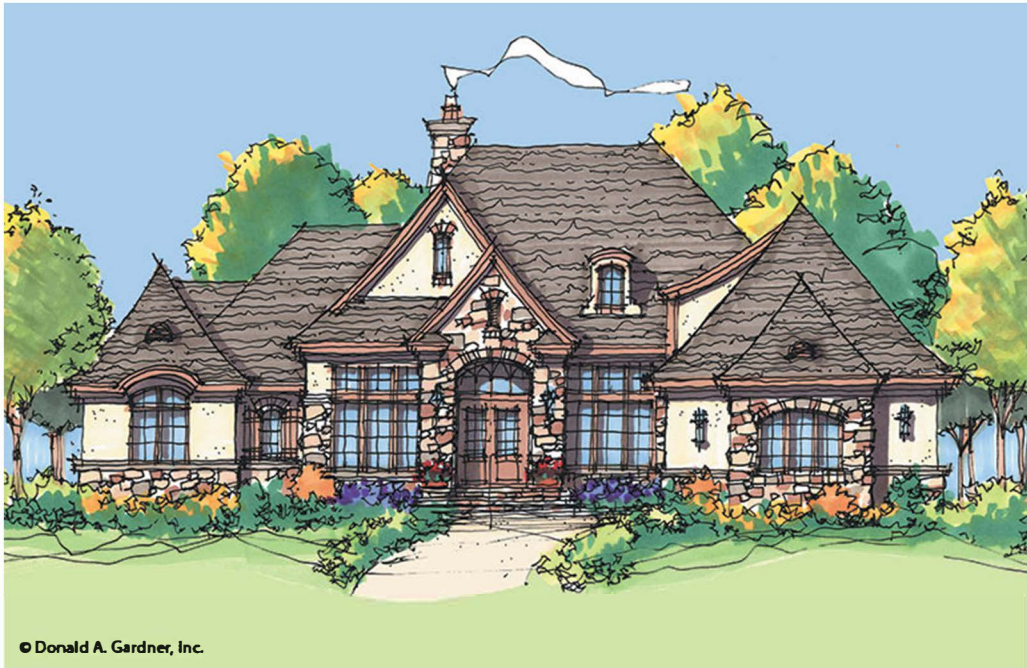
BONUS ROOM
OPTIONAL BONUS ROOM SF - 582

4357 heated sqft. Build cost starting at approx. \$918,953,000 Add approximately \$52,000.00 for optional bonus room. Pricing does not include outdoor fireplace.

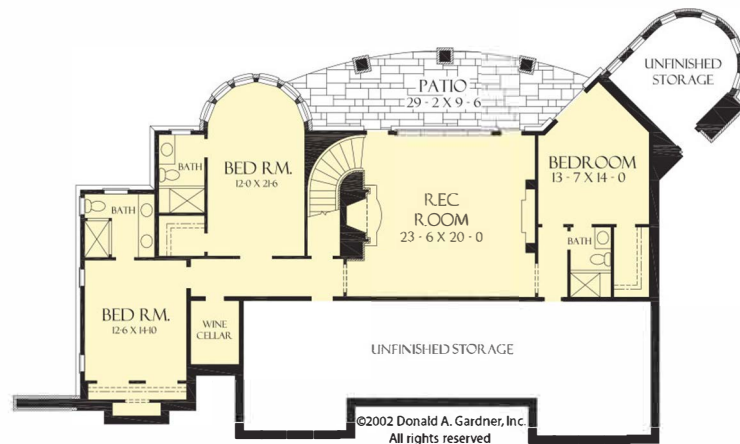
Floorplans and elevations are subject to change. Floorplan dimensions and square footage is approximate. Elevations are artists' conceptions.



The Hollowcrest Home Plan # W-5019



FLOOR PLAN
PLAN NO. 5019



BASEMENT SF - 1820

4357 heated sqft. Build cost starting at approx. \$918,953.00 Add approximately \$52,000.00 for optional bonus room. Pricing does not include outdoor fireplace.

Floorplans and elevations are subject to change. Floorplan dimensions and square footage is approximate. Elevations are artists' conceptions.