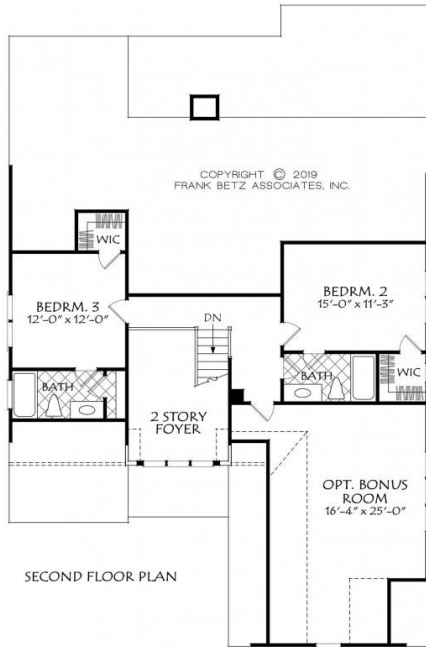
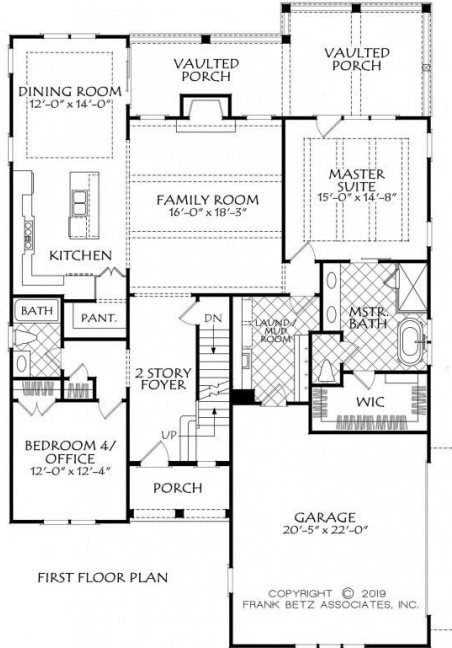


888.717.3003



HIGHLAND POINT



Square Footage

Total	2311
First Floor	1694
Second Floor	617

Dimensions

Width	44' - 0"
Depth	67' - 3"
Height	29' - 0"

Floorplans and Elevations are subject to change. Floorplan dimensions are approximate. Consult working drawings for actual dimensions and information. Elevations are artists' conceptions. Photographs may have been modified from the original construction documents.

2731 heated sqft. Build cost starting at approx. \$561,176.00 (slab foundation)
Add approximately \$48,000.00 for full unfinished basement