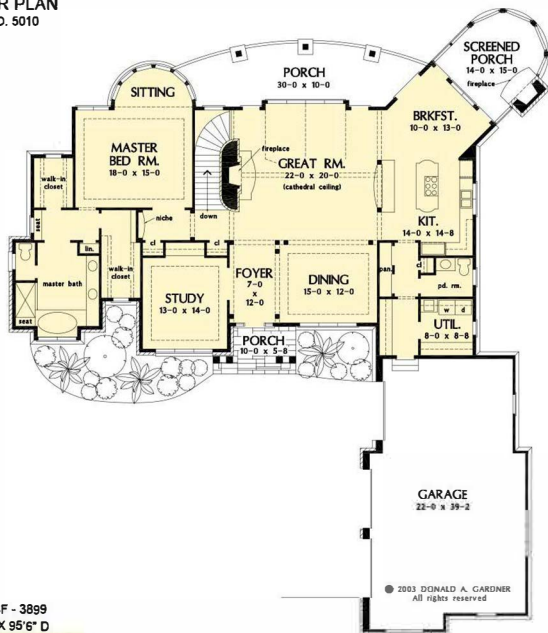




The Henningridge House Plan # W-5010

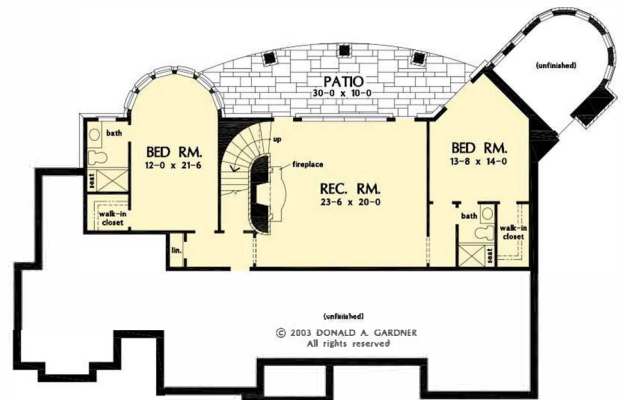


FLOOR PLAN
PLAN NO. 5010



TOTAL SF - 3899
82'4" W X 95'6" D
MAIN LEVEL SF - 2515

FLOOR PLAN
PLAN NO. 5010 D



BASEMENT SF - 1384

3899 heated sqft.
Build cost starting at approx. \$868,240.00.
Pricing does not include outdoor fireplace.

Floorplans and elevations are subject to change.
Floorplan dimensions and square footage is approximate.
Elevations are artists' conceptions.