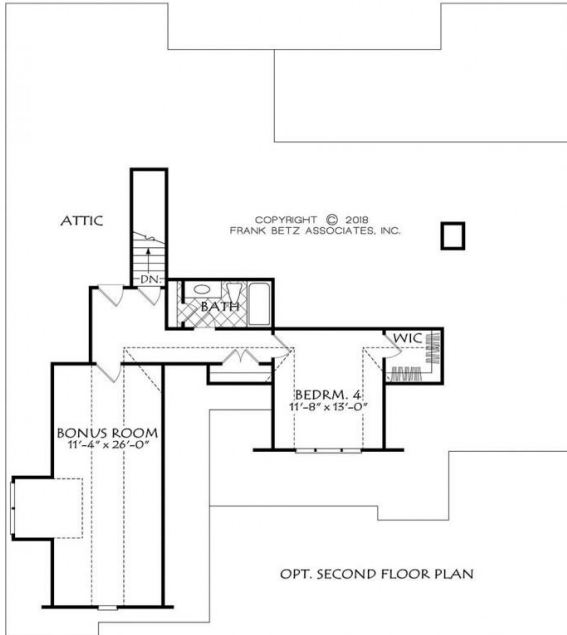
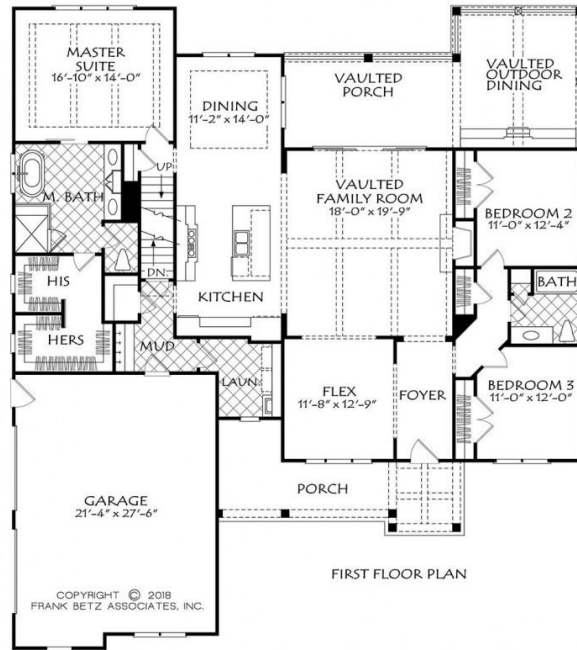


888.717.3003



HEMLOCK FALLS



Square Footage

Total	2187
First Floor	2187

Dimensions

Width	61' - 0"
Depth	68' - 6"
Height	24' - 6"

Floorplans and Elevations are subject to change. Floorplan dimensions are approximate. Consult working drawings for actual dimensions and information. Elevations are artists' conceptions. Photographs may have been modified from the original construction documents.

**2187 heated sqft. Build cost starting at approximately \$544,813.00 (slab foundation).  
Add approximately \$75,000.00 for optional second floor.  
Add approximately \$62,000.00 for full unfinished basement.  
Pricing doesn't include outdoor kitchen.**