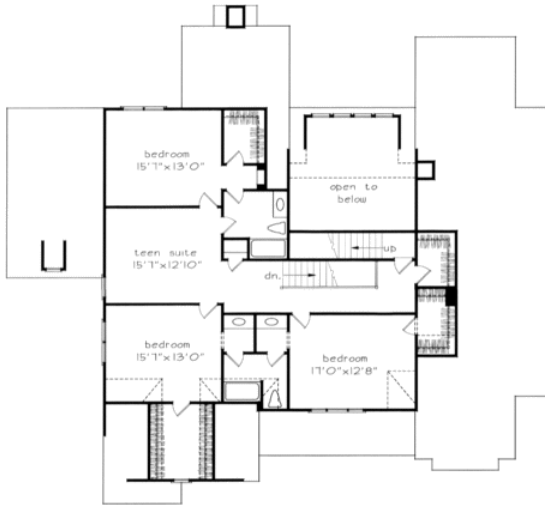
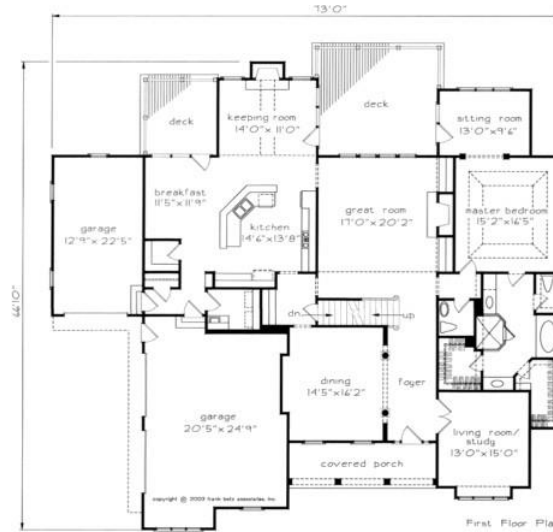


888.717.3003



HARTFORD SPRINGS



Square Footage

| | |
|--------------|------|
| Total | 3971 |
| First Floor | 2504 |
| Second Floor | 1467 |

Dimensions

| | |
|--------|-----------|
| Width | 73' - 0" |
| Depth | 66' - 10" |
| Height | 33' - 6" |

Floorplans and Elevations are subject to change. Floorplan dimensions are approximate. Consult working drawings for actual dimensions and information. Elevations are artists' conceptions. Photographs may have been modified from the original construction documents.

**3971 heated sqft. Build cost starting at approx. \$731,981.00 (slab foundation)
Add approximately \$71,000.00 for full unfinished basement.**