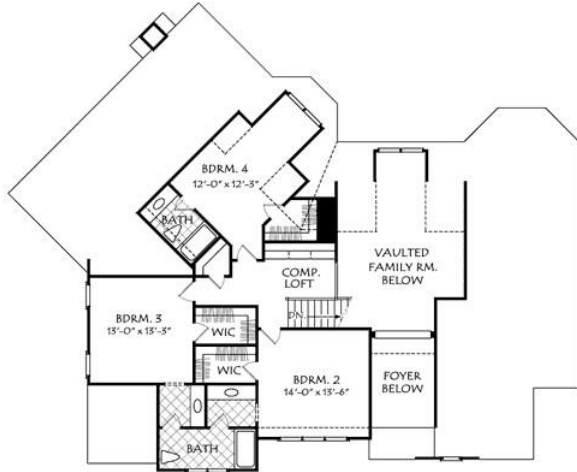


888.717.3003



HAINES CROSSING (C)



Square Footage

Total	3088
First Floor	2046
Second Floor	1042

Dimensions

Width	72' - 0"
Depth	59' - 0"
Height	31' - 6"

Floorplans and Elevations are subject to change. Floorplan dimensions are approximate. Consult working drawings for actual dimensions and information. Elevations are artists' conceptions. Photographs may have been modified from the original construction documents.

**3088 heated sqft. Build cost starting at approx. \$647,235.00 (slab foundation)
Add approximately \$58,000.00 for full unfinished basement**