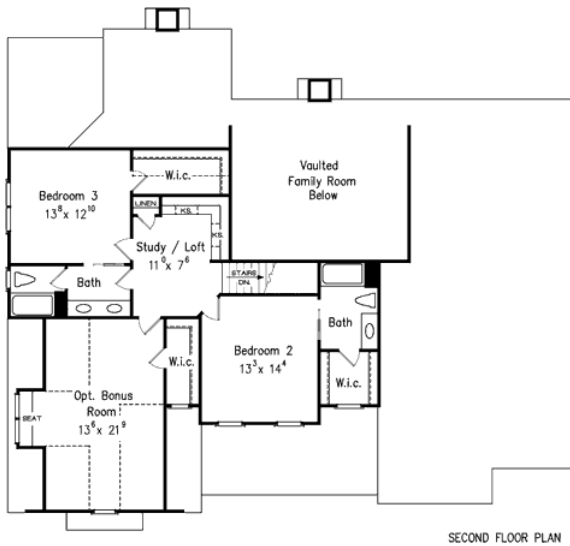
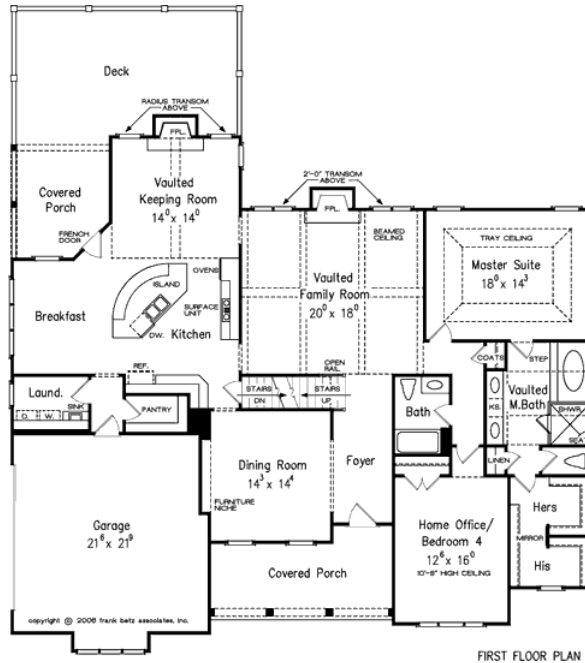


888.717.3003



DOWNING PARK



Square Footage

Total	3131
First Floor	2330
Second Floor	801
Opt. Bonus	366

Dimensions

Width	64' - 0"
Depth	59' - 4"
Height	32' - 0"

Floorplans and Elevations are subject to change. Floorplan dimensions are approximate. Consult working drawings for actual dimensions and information. Elevations are artists' conceptions. Photographs may have been modified from the original construction documents.

3497 heated sqft. Build cost starting at approx. \$661,099.00 (slab foundation). Add approximately \$76,000.00 for optional full unfinished basement