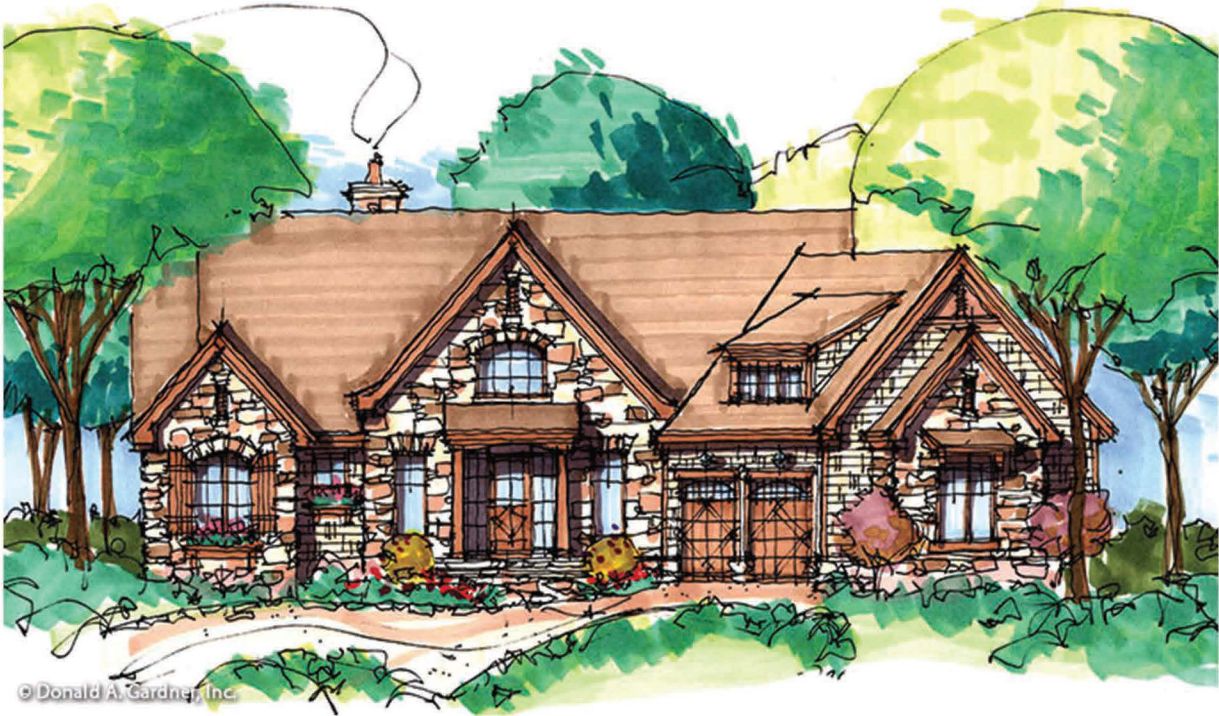
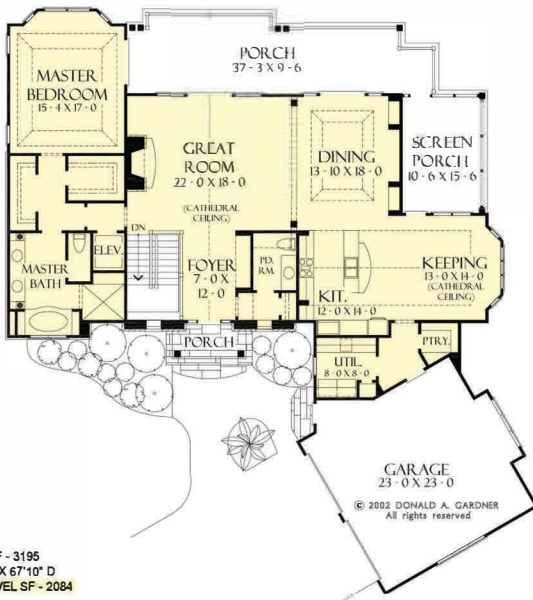


# The Dogwood Ridge Home Plan # W-5005

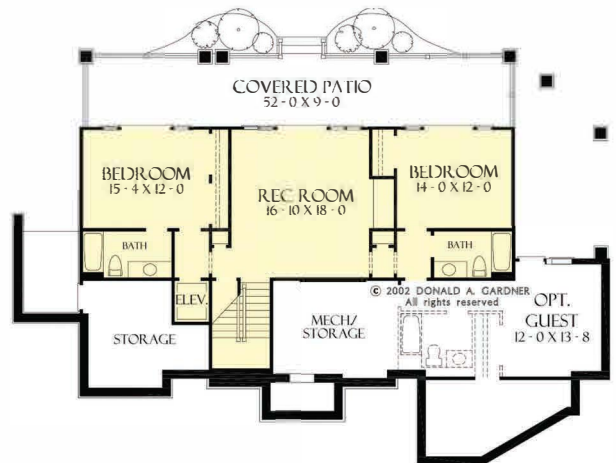


FLOOR PLAN  
PLAN NO. 5005



TOTAL SF - 3195  
106'0" W X 67'10" D  
MAIN LEVEL SF - 2084

FLOOR PLAN  
PLAN NO. 5005



BASEMENT LEVEL SF - 1111

3195 heated sqft.  
Build cost starting at approx. \$731,281.00  
Pricing does not include optional guest room in terrace.

Floorplans and elevations are subject to change.  
Floorplan dimensions and square footage is approximate.  
Elevations are artists' conceptions.