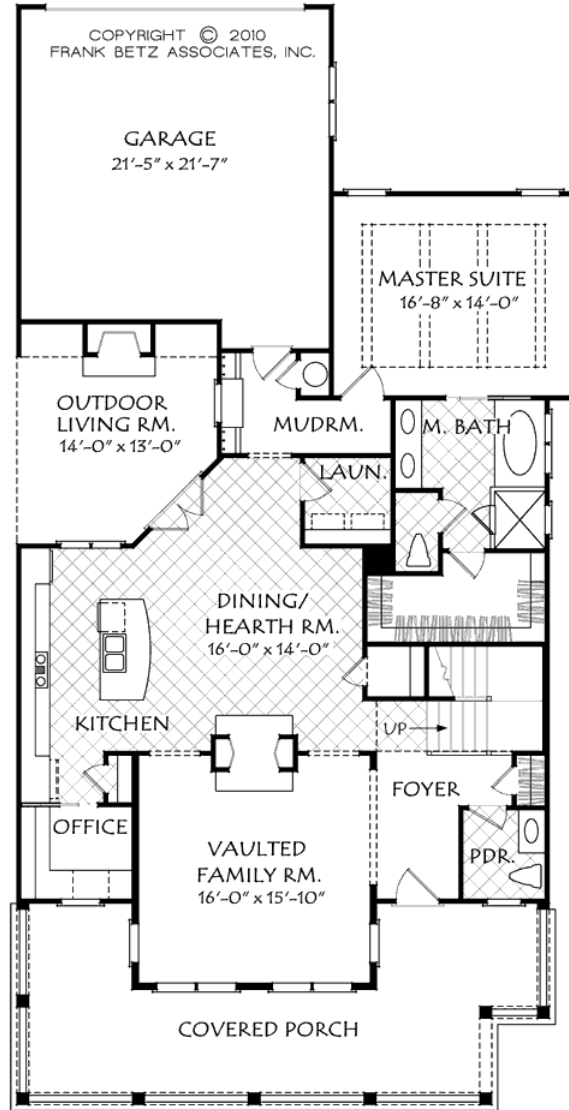


888.717.3003



DOGWOOD CREEK

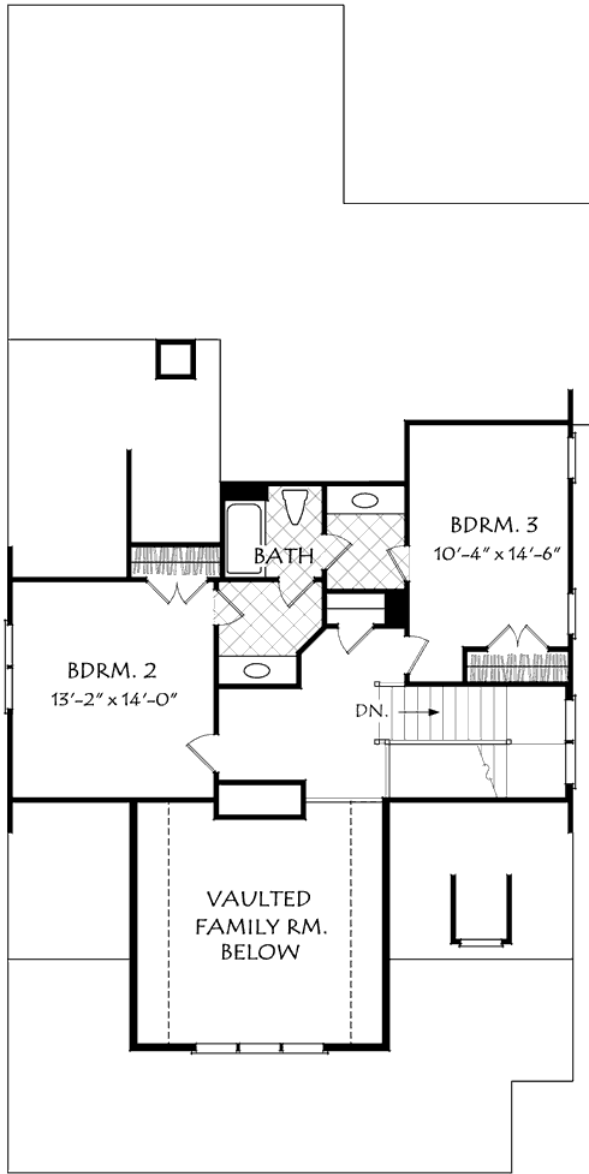


FIRST FLOOR PLAN

***2474 heated sqft. Build cost starting at approx. \$559,375.00 (slab foundation)***

***Pricing does include outdoor fireplace***

***Add approximately \$45,000.00 for full unfinished basement***



SECOND FLOOR PLAN

## Square Footage

Total	2202
First Floor	1554
Second Floor	648
Opt. Bonus	272

## Dimensions

Width	39' - 0"
Depth	76' - 6"
Height	33' - 0"

*Floorplans and Elevations are subject to change. Floorplan dimensions are approximate. Consult working drawings for actual dimensions and information. Elevations are artists' conceptions. Photographs may have been modified from the original construction documents.*

**2474 heated sqft. Build cost starting at approx. \$559,375.00 (slab foundation)  
 Pricing does include outdoor fireplace  
 Add approximately \$45,000.00 for full unfinished basement**