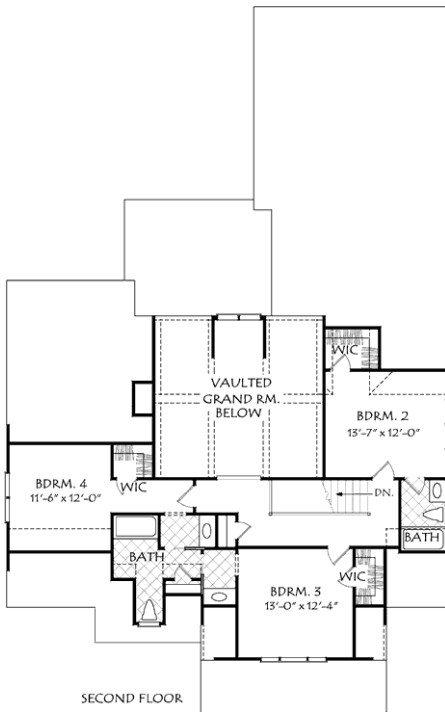
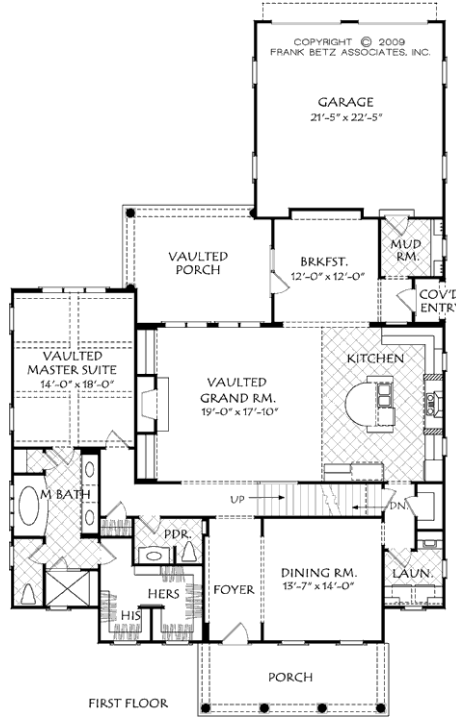


888.717.3003



DANBURY PARK



Square Footage

Total	3004
First Floor	2077
Second Floor	927

Dimensions

Width	50' - 0"
Depth	80' - 0"
Height	33' - 0"

Floorplans and Elevations are subject to change. Floorplan dimensions are approximate. Consult working drawings for actual dimensions and information. Elevations are artists' conceptions. Photographs may have been modified from the original construction documents.

**3163 heated sqft. Build cost starting at approx. \$621,930.00 (slab foundation)
Add approximately \$59,000.00 for full unfinished basement.**