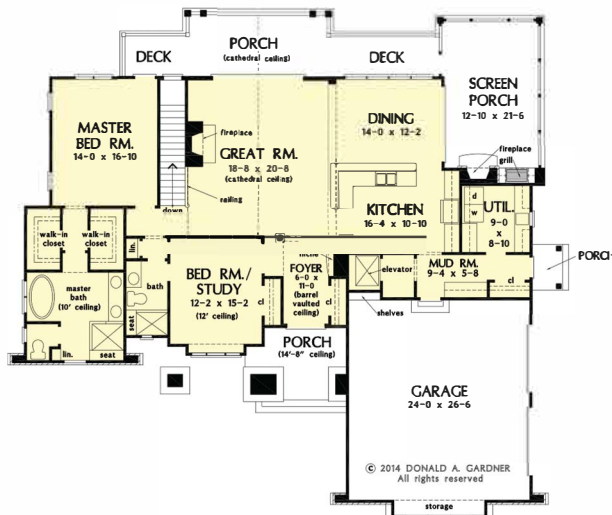




# The Cheyenne House Plan # W-1368-D

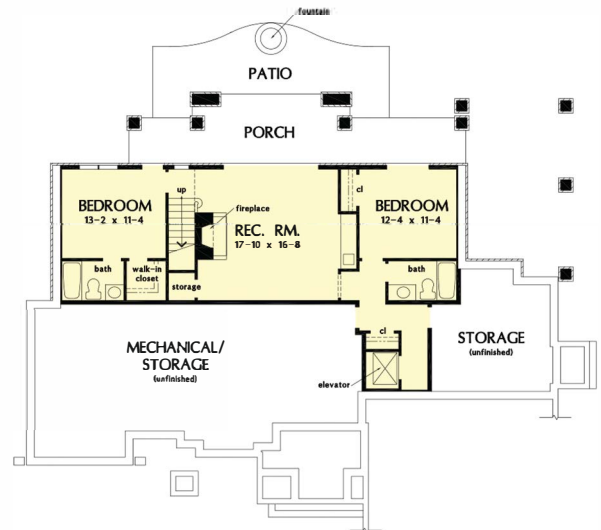


FLOOR PLAN  
PLAN NO. 1368



TOTAL SF - 3007  
72'11" W X 67'6" D  
MAIN LEVEL SF - 1976

FLOOR PLAN  
PLAN NO. 1368



BASEMENT SF - 1031

3007 heated sqft.  
Build cost starting at approx. \$719,614.00.  
Pricing does not include elevator, outdoor fireplace, and outdoor kitchen.

Floorplans and elevations are subject to change.  
Floorplan dimensions and square footage is approximate.  
Elevations are artists' conceptions.