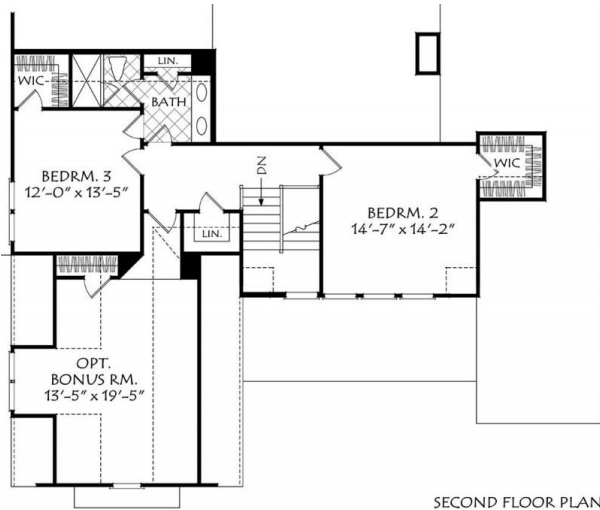
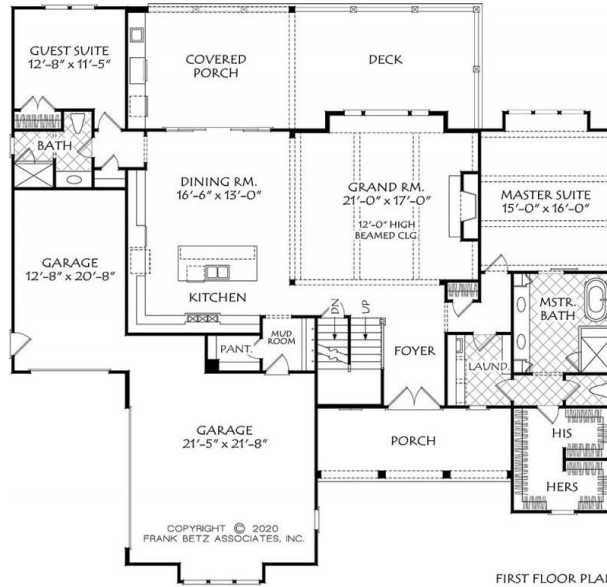


888.717.3003



CHESTNUT POINTE



Square Footage

Total	2823
First Floor	2133
Second Floor	690

Dimensions

Width	69' - 0"
Depth	66' - 0"
Height	27' - 7"

Floorplans and Elevations are subject to change. Floorplan dimensions are approximate. Consult working drawings for actual dimensions and information. Elevations are artists' conceptions. Photographs may have been modified from the original construction documents.

**3172 heated sqft. Build cost starting at approx. \$665,123.00 (slab foundation).
Add approximately \$61,000.00 for full unfinished basement.
Pricing doesn't include outdoor kitchen.**