



The Buttercup House Plan # W-1639

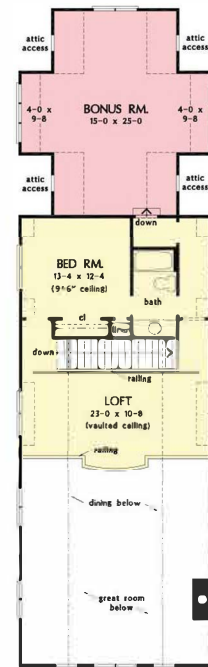


FLOOR PLAN
PLAN NO. 1639



TOTAL SF - 2807
50'4" W X 81'0" D
MAIN LEVEL SF - 2230

FLOOR PLAN
PLAN NO. 1639



SECOND LEVEL SF - 645
OPTIONAL BONUS ROOM SF - 498

2875 heated sqft.
Build cost starting at approx. \$633,385.00 (slab foundation).
Add approximately \$44,000.00 for optional bonus room.

Floorplans and elevations are subject to change.
Floorplan dimensions and square footage is approximate.
Elevations are artists' conceptions.