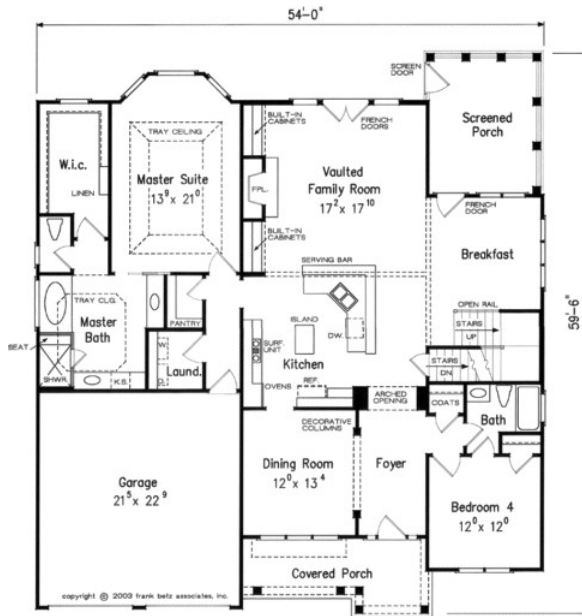


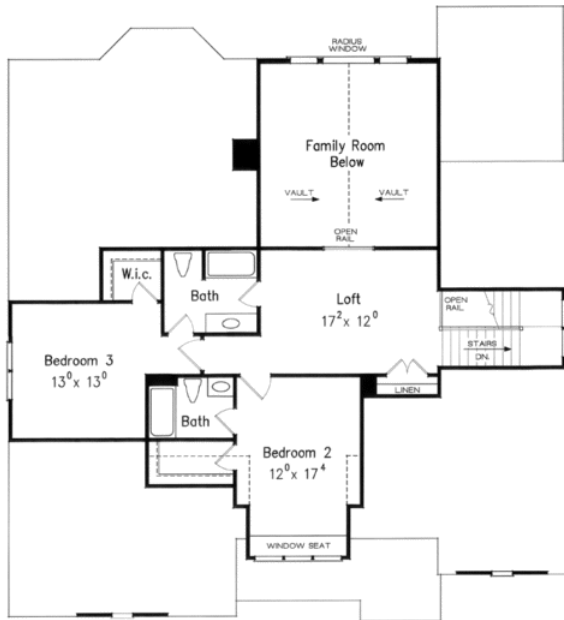
888.717.3003



BROOKWOOD PARK



FIRST FLOOR PLAN



SECOND FLOOR PLAN

Square Footage

Total	3001
First Floor	2123
Second Floor	878

Dimensions

Width	54' - 0"
Depth	59' - 6"
Height	32' - 0"

*Floorplans and Elevations are subject to change. Floorplan dimensions are approximate. Consult working drawings for actual dimensions and information. Elevations are artists' conceptions. Photographs may have been modified from the original construction documents.*

**3001 heated sqft. Build cost starting at approx. \$606,429.00 (slab foundation)  
Add approximately \$61,000.00 for full unfinished basement**