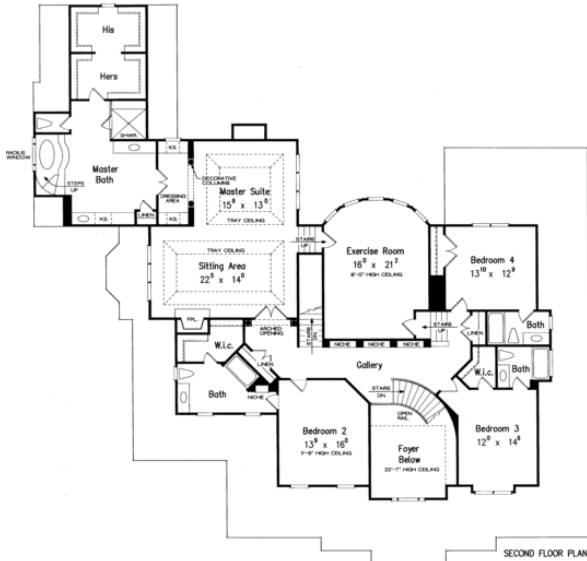
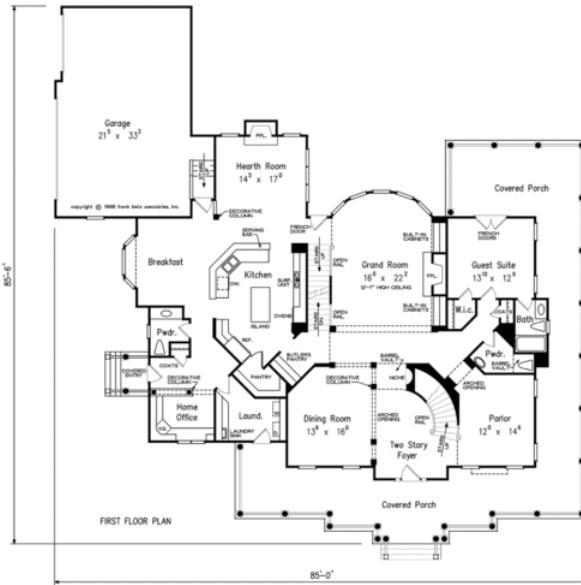


888.717.3003



BROOKSHIRE MANOR



Square Footage

Total	5466
First Floor	2732
Second Floor	2734

Dimensions

Width	85' - 0"
Depth	85' - 6"
Height	39' - 0"

Floorplans and Elevations are subject to change. Floorplan dimensions are approximate. Consult working drawings for actual dimensions and information. Elevations are artists' conceptions. Photographs may have been modified from the original construction documents.

**5466 heated sqft. Build cost starting at approx. \$1,053,442.00 (slab foundation)
Add approximately \$78,000.00 for full unfinished basement**