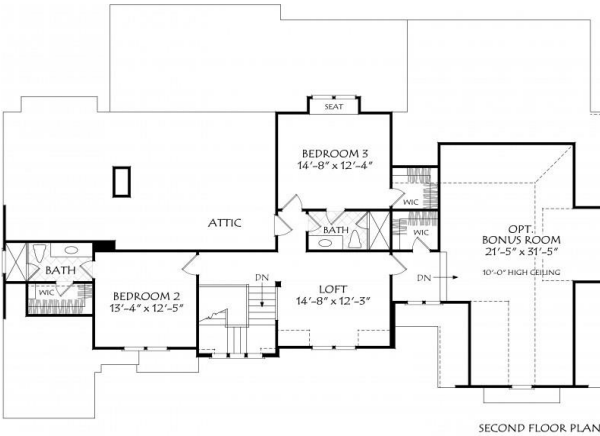
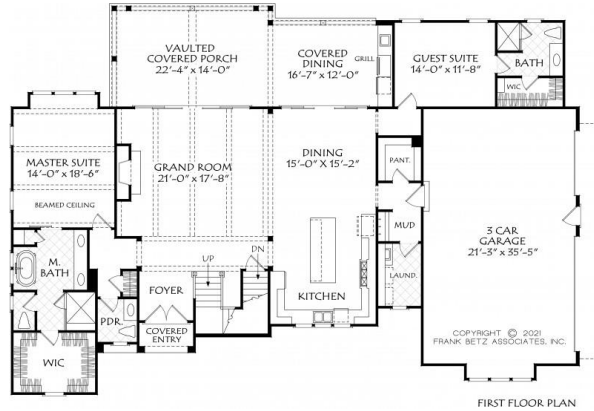


888.717.3003



BRISTOL WALK



Square Footage

Total	3045
First Floor	2186
Second Floor	859

Dimensions

Width	79' - 0"
Depth	54' - 0"
Height	32' - 4"

Floorplans and Elevations are subject to change. Floorplan dimensions are approximate. Consult working drawings for actual dimensions and information. Elevations are artists' conceptions. Photographs may have been modified from the original construction documents.

**3688 heated sqft. Build cost starting at approx. \$704,716.00 (slab foundation).  
Add approximately \$62,000.00 for full unfinished basement.  
Pricing doesn't include outdoor kitchen.**