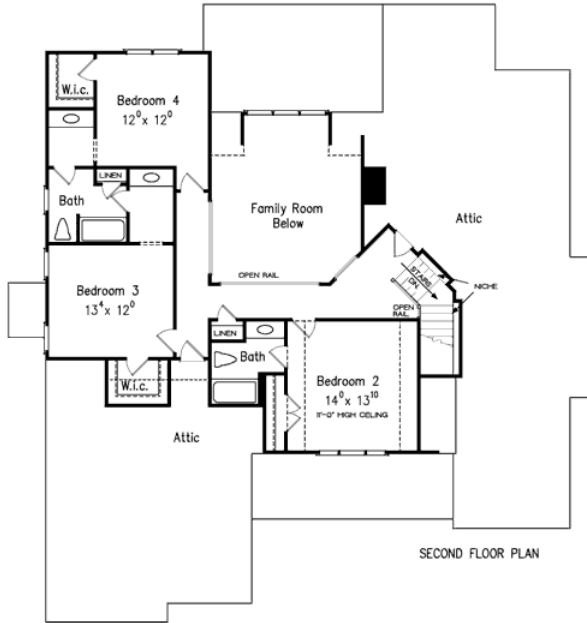
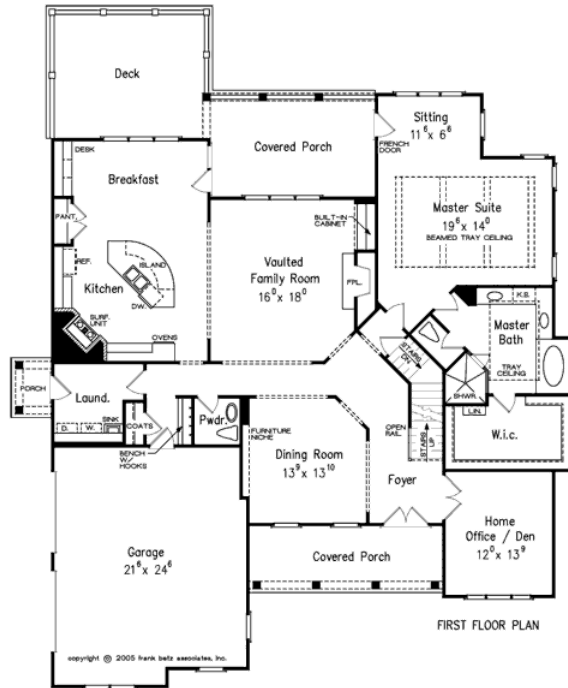


888.717.3003



BERKSHIRE POINTE



Square Footage

Total	3306
First Floor	2278
Second Floor	1028

Dimensions

Width	62' - 0"
Depth	66' - 0"
Height	32' - 6"

Floorplans and Elevations are subject to change. Floorplan dimensions are approximate. Consult working drawings for actual dimensions and information. Elevations are artists' conceptions. Photographs may have been modified from the original construction documents.

**3306 heated sqft. Build cost starting at approx. \$662,589.00 (slab foundation).
Add approximately \$75,000.00 for optional full unfinished basement**