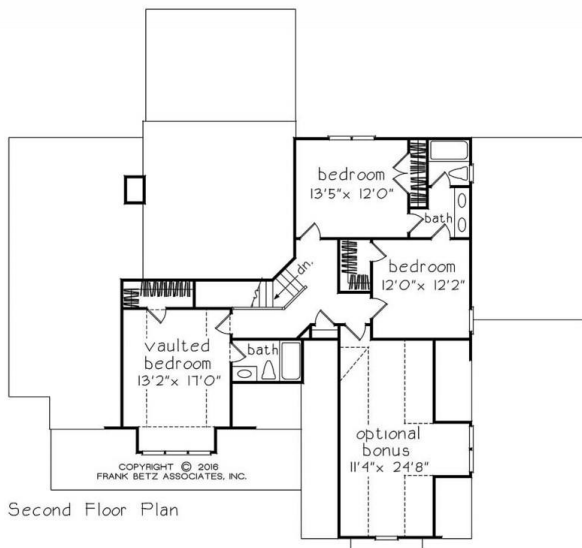
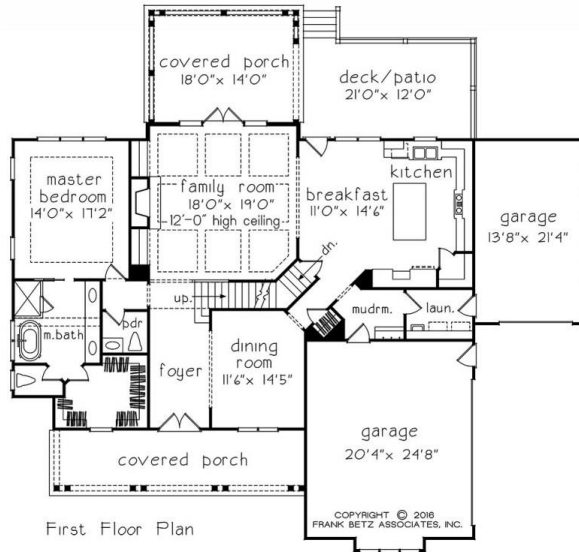


888.717.3003



ANSONBOROUGH



Square Footage

Total	2732
First Floor	1842
Second Floor	890

Dimensions

Width	71' - 0"
Depth	68' - 0"
Height	27' - 7"

0

Floorplans and Elevations are subject to change. Floorplan dimensions are approximate. Consult working drawings for actual dimensions and information. Elevations are artists' conceptions. Photographs may have been modified from the original construction documents.

**3066 heated sqft. Build cost starting at approx. \$627,622.00 (slab foundation)
Add approximately \$53,000.00 for full unfinished basement**